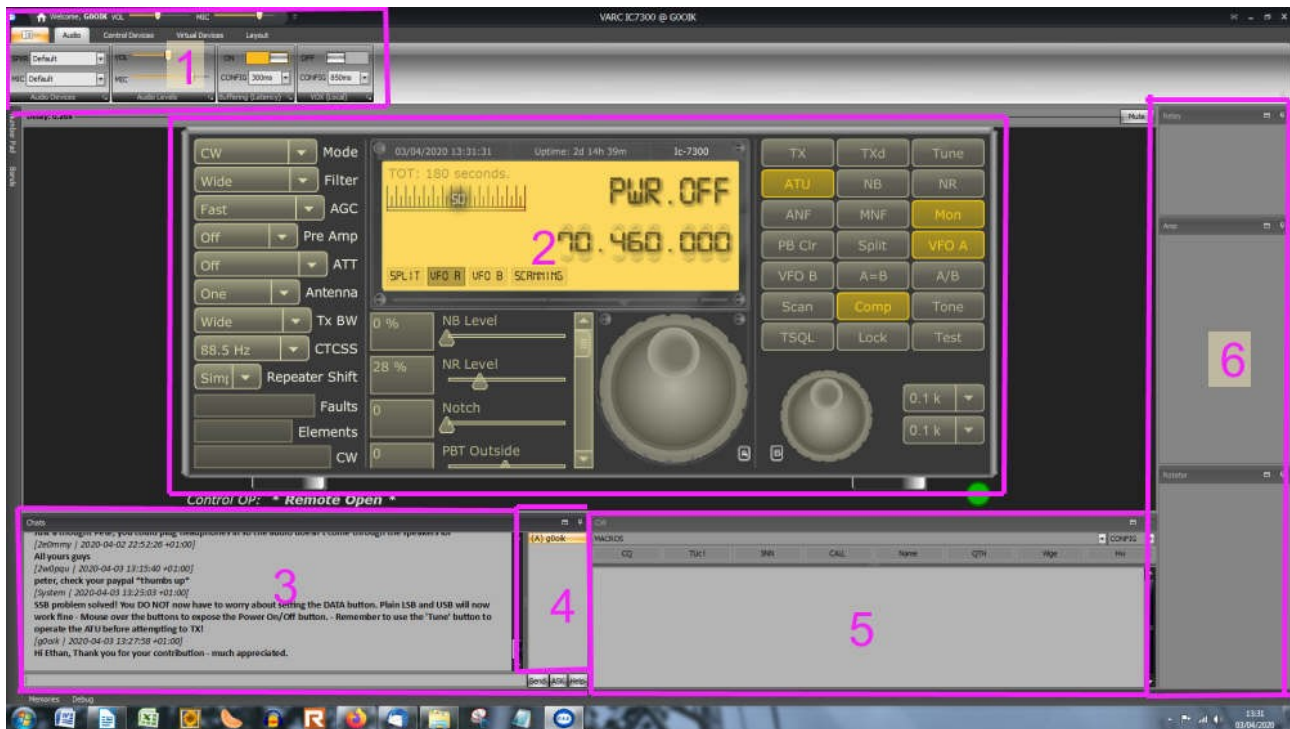
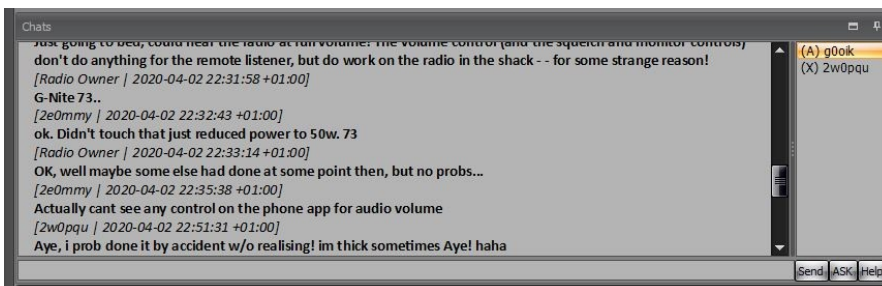


Chat Room and Etiquette

In this document we turn our attention to the chat room – Area 3 and 4



The chat room is again fairly self explanatory.



As long as your cursor is in the single line area at the bottom of the chat window, then you should be able to type into it. Then by hitting return or clicking the Send button your message will be displayed. Anyone in the room will hopefully see it straight away and it will remain visible after you have logged out.

Please be respectful and conscious of others that might be using the radio when you first log into it. It is all too easy to log in and jump straight to playing with the radio and not realise that there maybe others using the radio at the time.

Area 4 just to the right of the chat window will show all those that are logged in at the same time. You will also see who was the last person to operate the radio as their call will be seen as Control OP: (bottom left of radio – Area 2)



As soon as you make any adjustment to the radio you will become named as 'Control OP', so no special hand over is required. Please be mindful that you might be disturbing someone else's QSO or listening pleasure if they were logged in before you.

If there are any other operators logged in, please click the 'Ask' button before you take control of the radio. This will put a message in the chat window which says 'May I tune the remote?' If you don't get a response after 10 minutes then you can assume they are not by the radio and you can then take over.

No Control!

If you log into the radio and find that you are unable to adjust the radio and/or transmit, then please get in touch with me (peter@g0oik.co.uk) and I will look to adjust the permission settings to allow you to operate.

Please be mindful that if you are not a full licence holder that it is your responsibility to ensure that you are not transmitting above your permitted power limit.